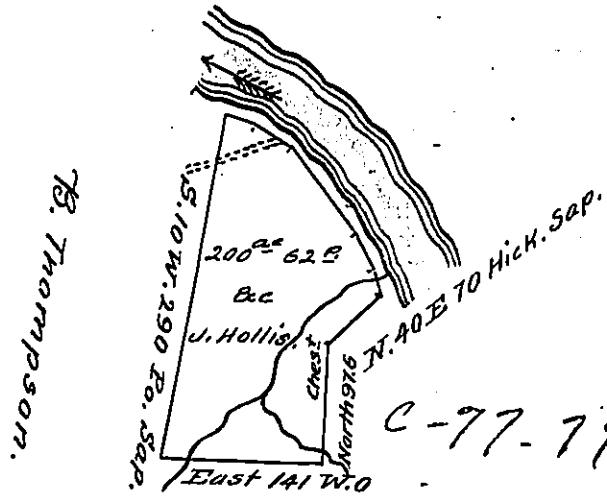


Courses & Dist^s down
river from Hick. Sap. to
Ironwood.

- No 1 N. 34 W. 20
- 2 N. 22 W. 28
- 3 N. 40 W. 90
- 4 N. 63 W. 40
- 5 N. 77 W. 21

to Ironwood.



A. M^e Curry.

DRAFT of a tract of land situate on the East bank of the Allegh-
any river in Cranberry township, Venango County. Containing Two hu-
ndred acres, Sixty two perches and allowance of 6 P. Cent.

Surveyed May 7th 1841 in pursuance of a Warrant granted to
James Hollis dated March 17th 1841.

W^m Connely, D.S.

To Jacob Gallade Esquire,
Surveyor General of
Pennsylvania.

IN TESTIMONY that the above is a copy of the original remaining on file in
the Department of Internal Affairs of Pennsylvania, made
conformably to an Act of Assembly approved the 16th day of
February, 1833, I have hereunto set my Hand and caused
the Seal of said Department to be affixed at Harrisburg,
this Nineteenth day of May 1905.

Isaac N. Brown
Secretary of Internal Affairs.